

Howard Morley
& Sons



PCM

£2,950 PCM

Peper Harow House

Peper Harow, GU8 6BG



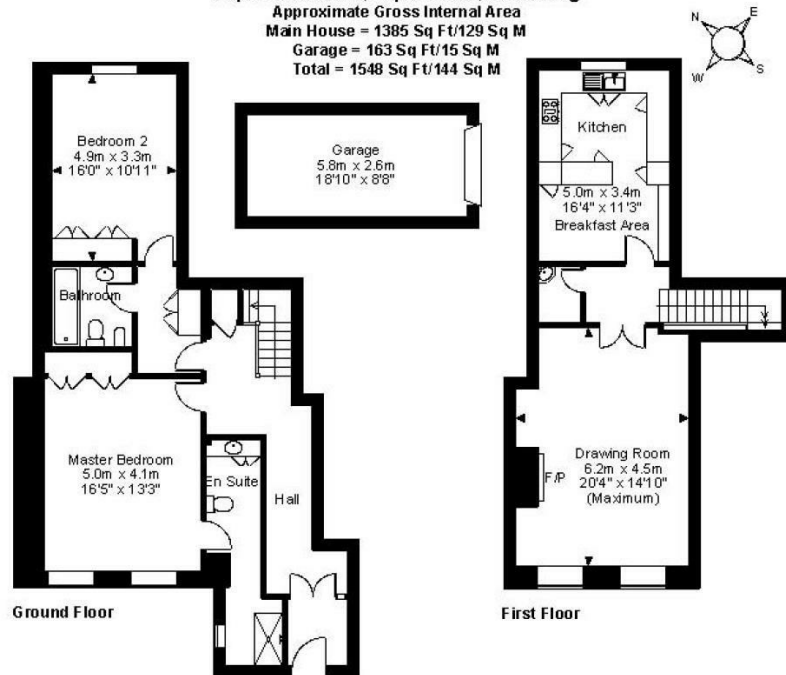
Peper Harow Park, Peper Harow, Godalming

Approximate Gross Internal Area

Main House = 1385 Sq Ft/129 Sq M

Garage = 163 Sq Ft/15 Sq M

Total = 1548 Sq Ft/144 Sq M

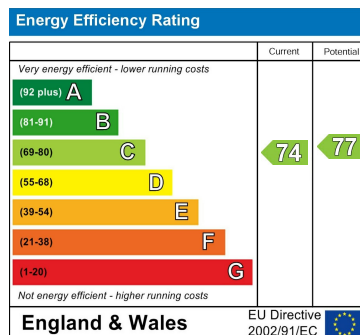


FOR ILLUSTRATIVE PURPOSES ONLY - NOT TO SCALE

The position & size of doors, windows, appliances and other features are approximate only.

© ehouse. Unauthorised reproduction prohibited. Drawing ref. dig.8114539WFF

2	
2	
1	



Agents Note: Whilst every care has been taken to prepare these particulars, they are for guidance purposes only. All measurements are approximate and are for general guidance purposes only and whilst every care has been taken to ensure their accuracy, they should not be relied upon and potential buyers/tenants are advised to recheck the measurements

Howard Morley & Sons

OFFICE ADDRESS
276 High Street
Guildford
Surrey
GU1 3JL

OFFICE DETAILS
01483 575 304
lettings@hmorley.co.uk
hmorley.co.uk